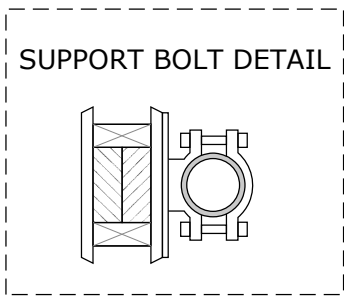
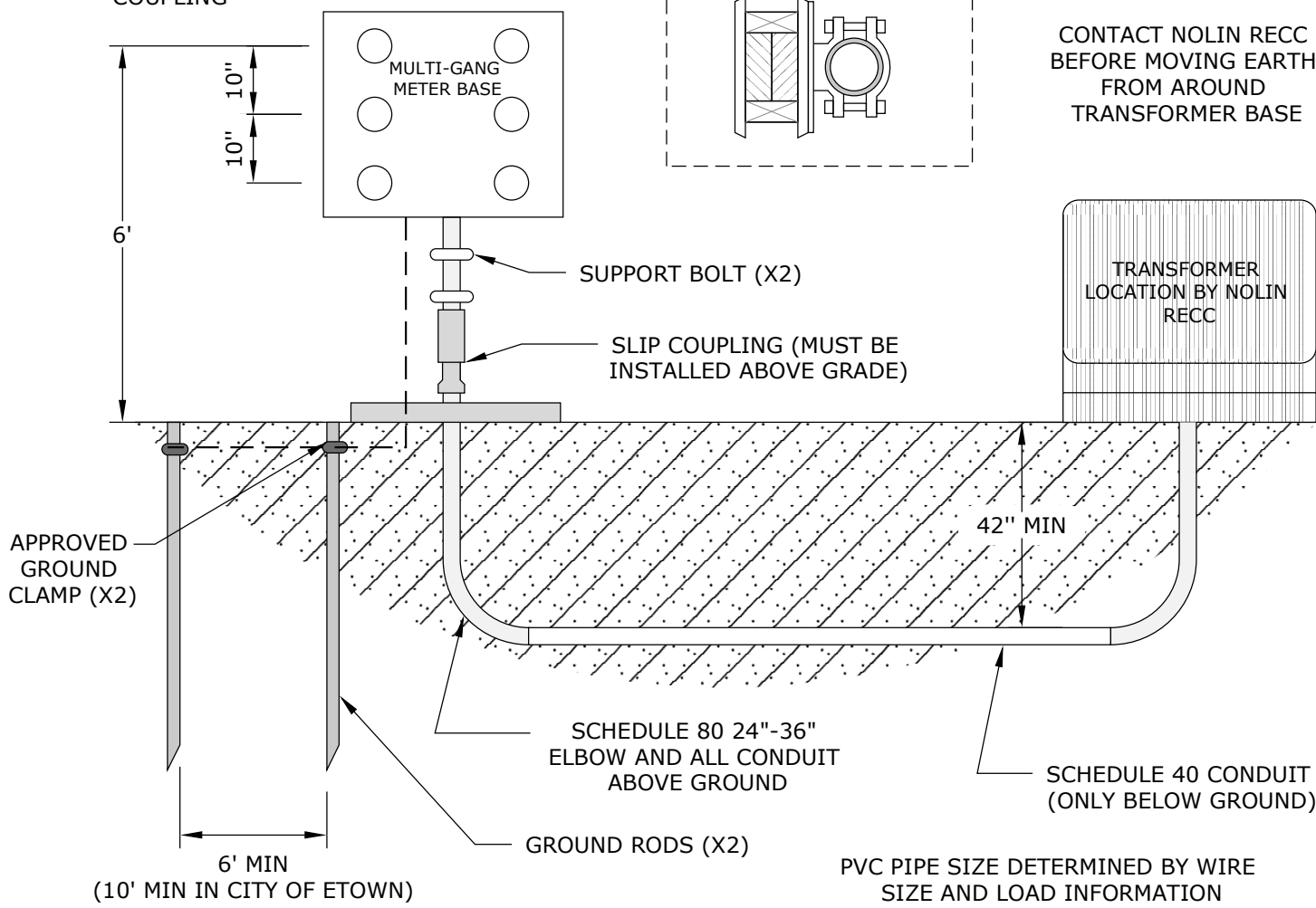


SUPPORT BOLTS MUST BE INSTALLED ABOVE OR ON TOP OUTER SHELL OF SLIP COUPLING



CONTACT NOLIN RECC BEFORE MOVING EARTH FROM AROUND TRANSFORMER BASE





CONDUIT MUST HAVE PULL STRING INSTALLED

- DIAGRAM NOT TO SCALE
- CONTACT NOLIN RECC LINE DESIGN DEPARTMENT BEFORE STARTING ANY WORK
- CALL 811 BEFORE DIGGING

<b>NOTES</b>	
Schedule 80 PVC on all elbows and conduit above ground; schedule 40 otherwise.	
42" ditch from top of conduit to final grade will be inspected by Nolin's Service department before backfilling.	
Ground is no. 6 CU continuous ground wire (City of E-town requires 12" of bare ground wire from the meter base and the remainder is enclosed in PVC to 3" below ground level).	
Ground rods should be minimum 8' x 1/2" diameter solid copper rod or a 5/8" solid galvanized rod. Ground wire is attached with approved ground clamps.	
Secondary conduit coming from Nolin's pole or transformer must come up on the left hand side of the meter base.	

**NOTES**

1. All meter base (service entrance) locations must be approved by Nolin’s Line Design Department prior to service installation.
2. 200 amp underground meter base must have a by-pass lever. Do not use a small meter base.
3. All electric connections, equipment, and equipment grounds shall comply with the National Electrical Code.
4. The member shall furnish and maintain for the life of the electrical service all conduits, conduit straps, grounds, disconnects, meter base, and all conductors beyond Nolin’s point of delivery.
  - In three phase applications, Nolin shall furnish the meter base.
5. Nolin shall furnish and maintain the meter and service drop.
6. Energizing of the member’s service is contingent upon an approved State or City electrical inspection.
7. The lower support bolt may be attached to the upper outside sleeve of the slip coupling.
8. Concrete pad to be poured below multi-gang meter base. Coordinate with Nolin’s Line Design Department before pouring concrete.
9. All underground conduit must have pull string installed (150 lbs test min).
10. The slip coupling should be installed a minimum of 4" above the final grade. Upon installation, the slip coupling should be opened (or extended) 2" to allow the coupling to both extend and retract.

 RURAL ELECTRIC COOPERATIVE CORPORATION A Touchstone Energy® Cooperative  MAIN OFFICE: 270-765-6153	PAGE 2 OF 2		
	DRAWN BY: LANDER RYAN	UNDERGROUND SERVICE FROM PAD-MOUNTED TRANSFORMER TO MULTI- GANG METER BASE	LAST REVISION
APPROVED BY: GREG LEE	5/30/2018		