

- DIAGRAM NOT TO SCALE
- CONTACT NOLIN RECC LINE DESIGN DEPARTMENT BEFORE STARTING ANY WORK
- CALL 811 BEFORE DIGGING



A Touchstone Energy® Cooperative

MAIN OFFICE: 270-765-6153

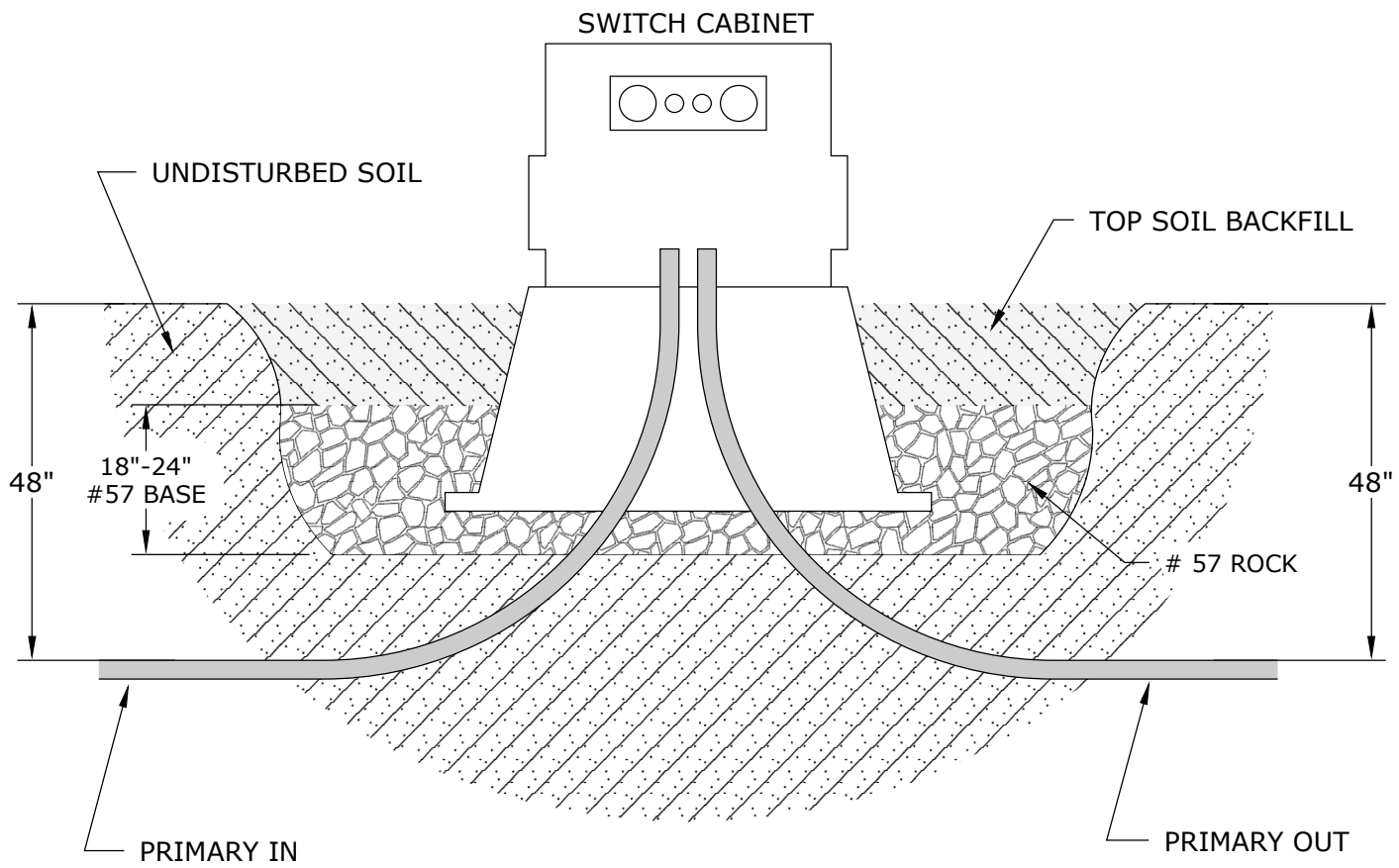
DRAWN BY:
LANDER RYAN

APPROVED BY:
GREG LEE

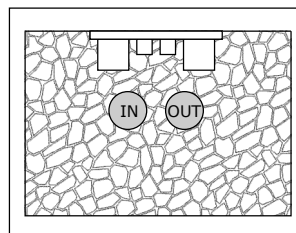
**SINGLE PHASE SWITCH
CABINET INSTALLATION**

LAST REVISION

1/7/2019



TOP VIEW



- DIAGRAM NOT TO SCALE
- CONTACT NOLIN RECC LINE DESIGN DEPARTMENT BEFORE STARTING ANY WORK
- CALL 811 BEFORE DIGGING



A Touchstone Energy® Cooperative



MAIN OFFICE: 270-765-6153

DRAWN BY:
LANDER RYAN

APPROVED BY:
GREG LEE

**SINGLE PHASE SWITCH
CABINET INSTALLATION**

LAST REVISION

1/7/2019