

**NOTES**

Schedule 80 PVC on all elbows and conduit above ground; schedule 40 otherwise.

All conduit depths will be based on final grade. Final conduit will be inspected by Nolin's Service department before backfilling.

- DIAGRAM NOT TO SCALE
- CONTACT NOLIN RECC LINE DESIGN DEPARTMENT BEFORE STARTING ANY WORK
- CALL 811 BEFORE DIGGING



DRAWN BY:  
LANDER RYAN

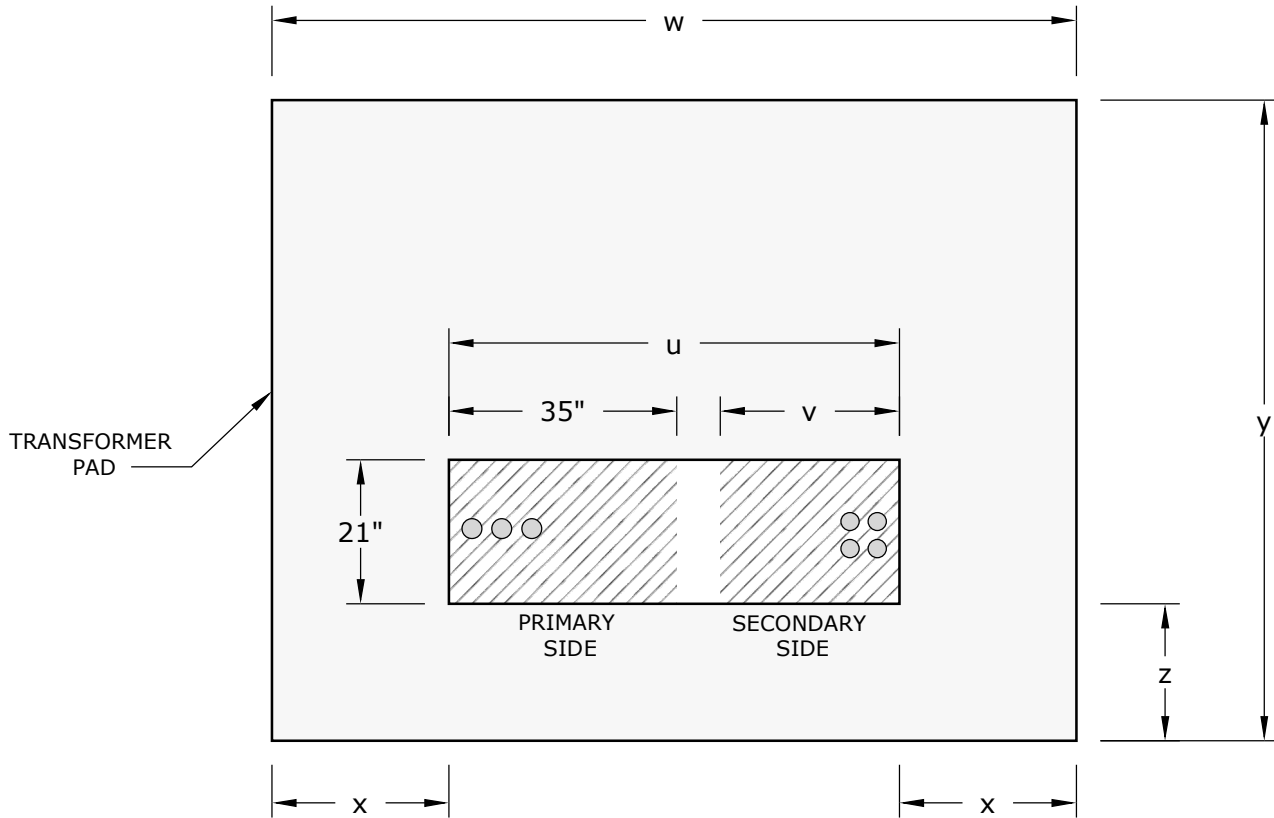
APPROVED BY:  
GREG LEE

**THREE PHASE PRIMARY TRANSFORMER INSTALLATION**

LAST REVISION

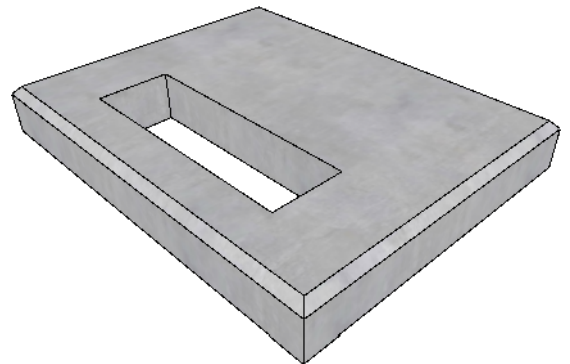
5/30/2018

**TOP VIEW  
(PAD ONLY)**



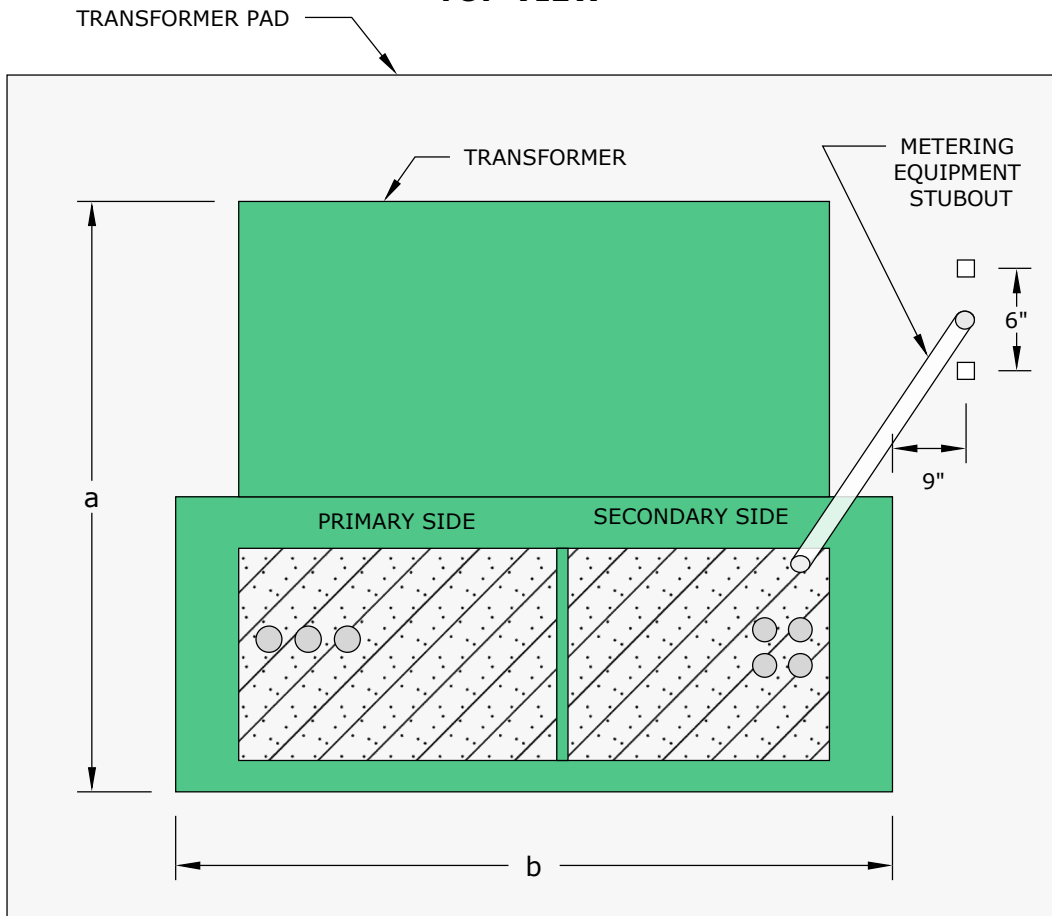
ALL PRIMARY AND SECONDARY CONDUITS MUST BE INSTALLED WITHIN THEIR RESPECTIVE SHADED REGIONS

KVA	u	v	w	x	y	z
<b>75</b>	60.5	25	100.5	20	60	12
<b>150</b>	60.5	25	100.5	20	60	12
<b>225</b>	63.5	28	103.5	20	68	12
<b>300</b>	63.5	28	103.5	20	68	12
<b>500</b>	63.5	28	103.5	20	72	12
<b>750</b>	63.5	28	103.5	20	78	12
<b>1000</b>	63.5	28	103.5	20	84	12
<b>1500</b>	63.5	28	103.5	20	106	12
<b>2000</b>	69.5	34	117.5	24	108	12
<b>2500</b>	72.5	34	120.5	24	108	12

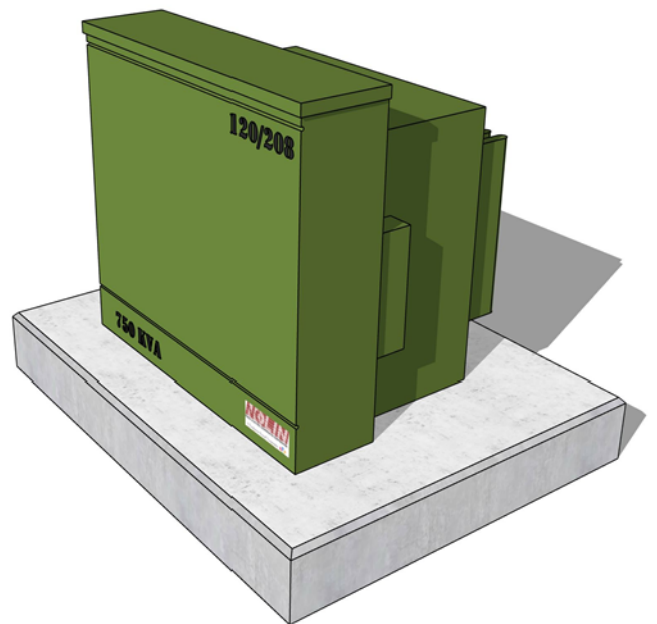


ALL TRANSFORMER PADS MUST BE 12" THICK, WITH A 10" BASE OF #57 ROCK. ALL TRANSFORMER PADS MUST BE REINFORCED WITH FIBER OR REBAR REINFORCEMENT. SEE NOTE 8

### TOP VIEW



KVA	a	b
75	45.5	63.5
150	49.5	63.5
225	51.5	66.5
300	49.5	66.5
500	51.5	66.5
750	55.5	66.5
1000	55.5	66.5
1500	58.5	66.5
2000	59.5	72.5
2500	61.5	75.5



**NOTES**

1. All transformer locations must be approved by Nolin’s Line Design Department prior to service installation.
2. All electric connections, equipment, and equipment grounds shall comply with the National Electrical Code.
3. The member shall furnish and maintain for the life of the electrical service all conduits, conduit straps, grounds, disconnects, meter base, and all conductors beyond Nolin’s point of delivery.
  - In three phase applications, Nolin shall furnish the meter base.
4. Nolin shall furnish and maintain the meter.
5. Energizing of the member’s service is contingent upon an approved State or City electrical inspection.
6. All underground conduit must have pull string installed (150 lbs test min).
7. The concrete mix for the transformer pad should be 2 ½ - 3 ¼ Nominal 3000 lbs.
8. The concrete pad must contain a grid of rebar reinforcement or contain fiber reinforcement in the concrete mix. The concrete pad must sit on a 10" base of #57 rock.



DRAWN BY:  
LANDER RYAN  
APPROVED BY:  
GREG LEE

**THREE PHASE PRIMARY  
TRANSFORMER  
INSTALLATION**

LAST REVISION

5/30/2018